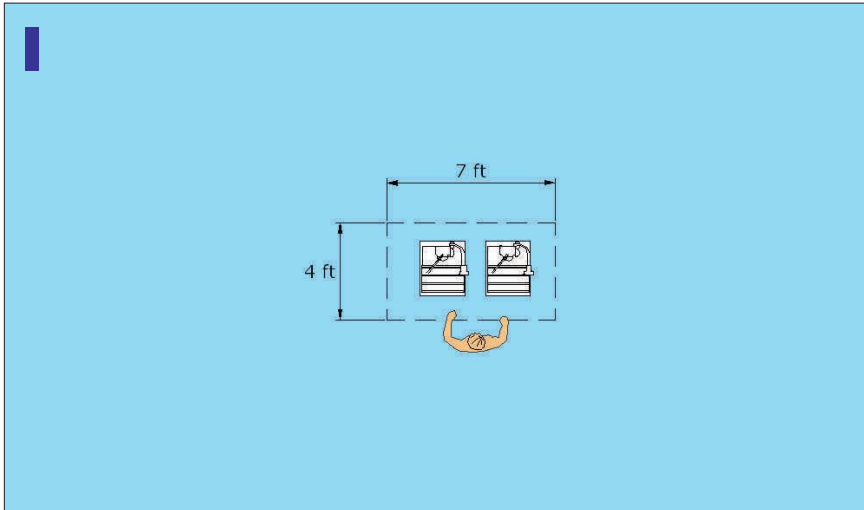


**From simple and manual to
advanced and fully automatic:
Tailor-made for the job!**



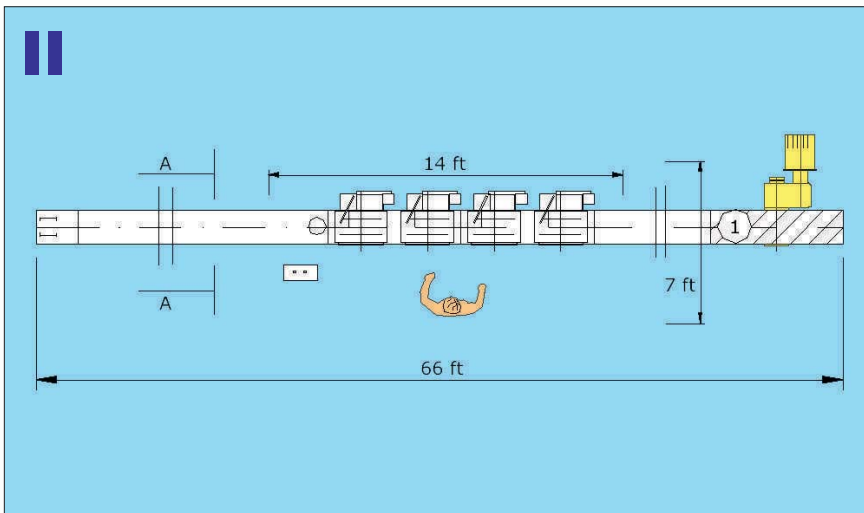
TYPE I for 1 operator

Filling machines on floor

Capacity:

80 cylinders (20#) per hour (if filling time for each cylinder = 45 seconds)

40 cylinders (33#) per hour (if filling time for each cylinder = 90 seconds)



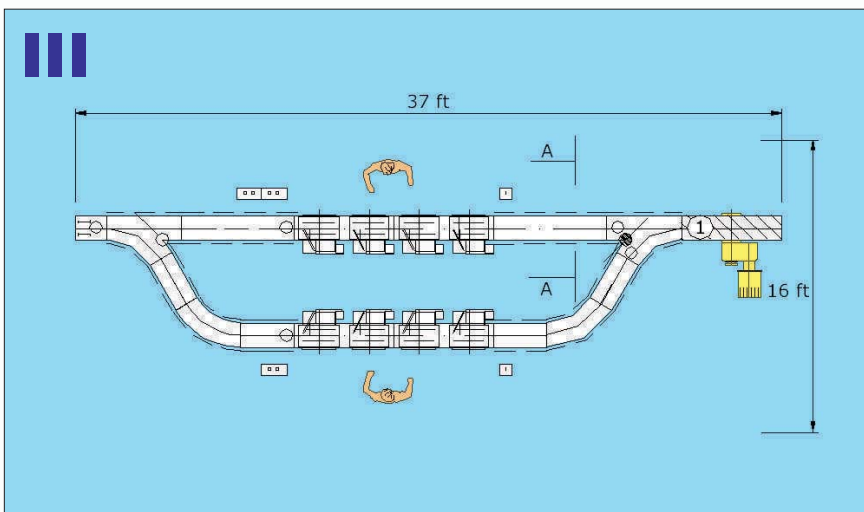
TYPE II for 1 operator

Filling machines installed in chain conveyor with automatic lifting tables

Capacity:

140 cylinders (20#) per hour (if filling time for each cylinder = 45 seconds)

90 cylinders (33#) per hour (if filling time for each cylinder = 90 seconds)



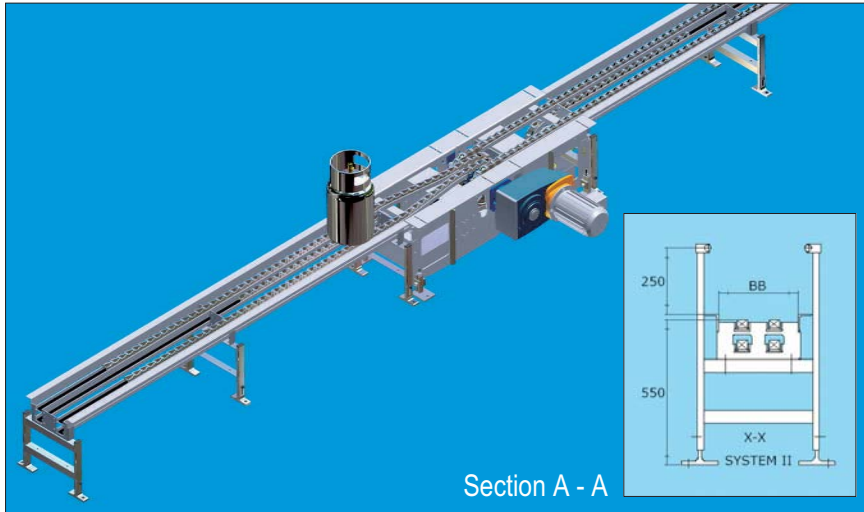
TYPE III for 2 operators

Filling machines installed in chain conveyor with automatic lifting tables

Capacity:

280 cylinders (20#) per hour (if filling time for each cylinder = 45 seconds)

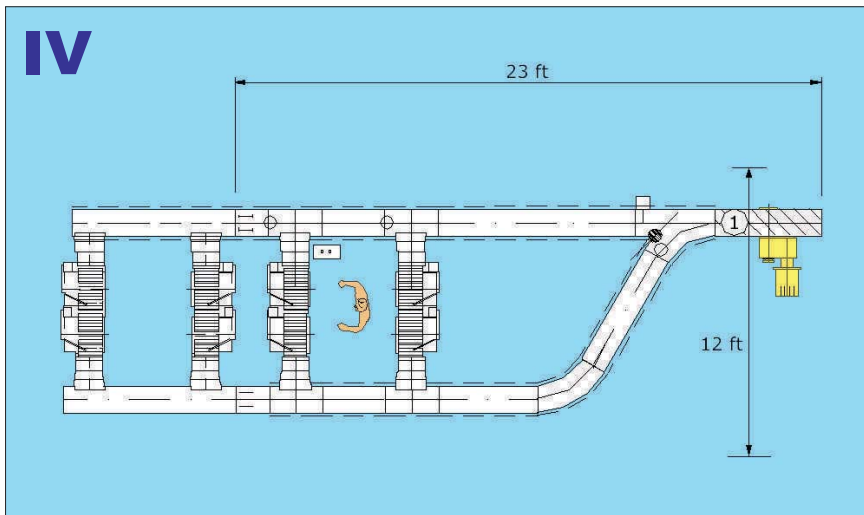
180 cylinders (33#) per hour (if filling time for each cylinder = 90 seconds)



Chain conveyor plant

Kosan Crisplant's chain conveyor plant is designed for efficient and rational transport of LPG cylinders from an unloading point, past various points of operation (e.g. checking, renovation, filling of the cylinders), to a loading point.

A chain conveyor plant consists of chain conveyor sections, which are bolted together. Chain rails, in the shape of channel irons, are welded into the construction. The chain rails carry special conveyor chains, driven by the necessary number of driving units with compact gear. The sections are manufactured of rolled angle-iron and channel-iron sections, and are constructed as straight, Y-shaped, V-shaped, or curved sections.



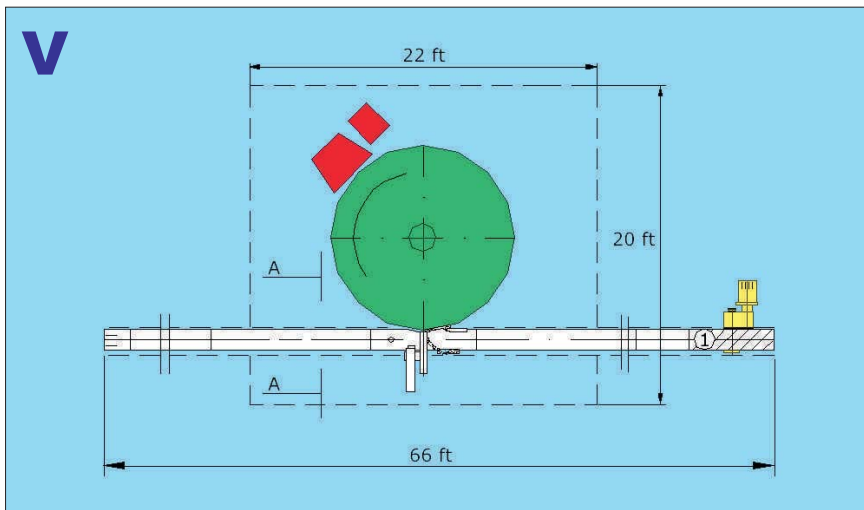
TYPE IV for 1 operator

Filling machines installed with roller conveyor & future extension possibilities

Capacity:

140 cylinders (20#) per hour (if filling time for each cylinder = 45 seconds)

90 cylinders (33#) per hour (if filling time for each cylinder = 90 seconds)



TYPE V for 1 operator

Filling carousel type EFC/U-12

Capacity (with 6 filling machines):

240 cylinders (20#) per hour (if filling time for each cylinder = 45 seconds)

180 cylinders (33#) per hour (if filling time for each cylinder = 90 seconds)

Capacity (with 12 filling machines):

480 cylinders (20#) per hour (if filling time for each cylinder = 45 seconds)

360 cylinders (33#) per hour (if filling time for each cylinder = 90 seconds)

Company profile

Kosan Crisplant a/s from Denmark – members of the U.K. based FKI Group – occupy the leading position within the LPG industry regarding the development, engineering, production and installation of total system solutions for transportation, filling, control, maintenance and distribution of all types of LPG cylinders.

Since 1951, we have delivered more than 1,500 plant systems, from one-man filling units to complete filling and maintenance systems with a capacity of more than 5,000 cylinders per hour, to business partners in approximately 110 countries world-wide.

We presently employ approx. 90 persons in our headquarters in Aarhus, Denmark, and we have developed an efficient net of representatives in more than 20 countries worldwide. Ely Energy, Inc. (Tulsa, Oklahoma), represents us in the U.S.A.



Self-decoupling filling head type SAS for truck cylinders with 1 3/4" ACME filler valve.



Manual filling head type PI-USA for POL valves (left) and self-decoupling filling head type SAS for 20# cylinders with POL valves (right).

Electronic filling machine type UFM



State-of-the-art electronic filling machine - Good for filling all types of LPG cylinders.



Cylinder filling carousel type EFC/U-24 with 24 electronic filling machines - Also available in smaller models for 8, 12 or 18 filling machines.



Electronic leak detector type ET-GD/IR - Good for testing almost all types of LPG cylinders - Operation with infra-red gas detection principle - Preset limits can be adjusted to local conditions - Flexible installation: in-line in chain or roller conveyor or as stand-alone unit - Modular design with thoroughly tested components - Easy and safe to operate - 100% reliable test (can detect down to 1 g LPG per hour) - Eliminates human errors in the test process - Minimum maintenance and service requirement - Requires minimum space

Ely Energy, Inc. (EEI)
11385 E. 60th Place So.
Tulsa, Oklahoma 74146
U.S.A.

Phone: 918-250-6601
Fax: 918-254-5412

sales@elyenergy.com
www@elyenergy.com

Kosan Crisplant a/s
P.O. Pedersens Vej 22
DK-8200 Aarhus N
Denmark

Phone: +45 87 40 30 00
Fax: +45 87 40 30 10

sales@kosancrisplant.com
www.kosancrisplant.com

